

Migrating from Insight 6.x to LUNA 7.1+

- [Install a new version of LUNA 7.1+](#)
- [Copy existing LUNA user generated content](#)
- [Migrate and/or Publish your Insight 6.x collections to LUNA 7.1+](#)
 - [Legacy Insight Collections](#)
 - [Migrating Insight 6.x collections to the LUNA Library](#)
- [Post Migration Tasks](#)
 - [Move or adjust references to media/images](#)
 - [Updating LUNA 7 Repository for BookReader objects](#)
 - [Shutting down your Insight suite](#)
 - [Password Resets](#)
 - [LDAP](#)
 - [Validating your record and media counts](#)



For any migration task, our support department would be more than happy to help you through the process. Just contact us at lunasupport@luna.imaging.com and we will set up a time to take you through the process.

The migration process from Insight to LUNA is broken down into several processes:

1. [Install a new version of LUNA 7.1+](#)
2. [Copy existing LUNA user generated content \(Media Groups, etc\) using the LUNA db Migrator.](#)
3. [Migrate and/or Publish your Insight 6.x collections to LUNA 7.1+ using the LUNA Publisher's 7.1+ Migration feature.](#)

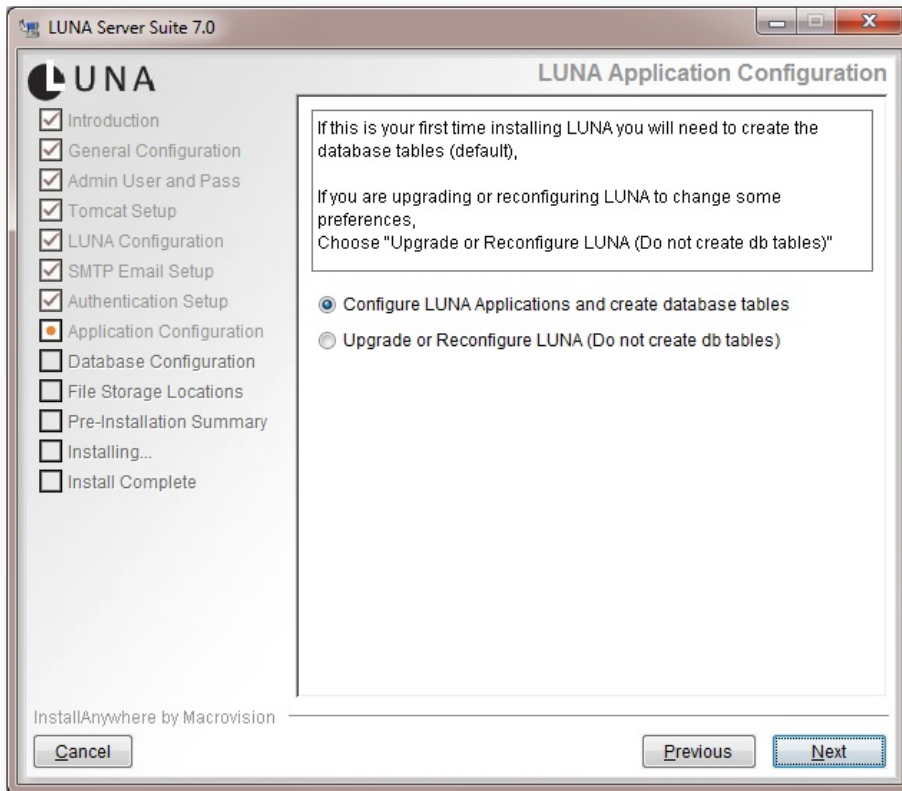
Install a new version of LUNA 7.1+

Follow the instructions in [Installing or Upgrading LUNA](#) to Install a new version of LUNA 7.1+

You can download the latest installers [here](#)



DO NOT choose Upgrade or Reconfigure



Copy existing LUNA user generated content

To migrate Media Groups, Presentations, Annotations, Credentials, User Settings and other user generated content, we have created a tool called the LUNA db migrator. This will export the data from your LUNA 6.x database and import into your new LUNA 7.1+ database.

You can download the latest installers [here](#)

Enter your LUNA 7 Serial number and the admin account you used when installing LUNA 7.1+ in the previous step.



A few things before we start

- 6.x Migration to 7.x
- Migration Complete

We will need your:

- LUNA 7.x Serial Number
- LUNA 7 Admin account and password

LUNA 7 Serial Number

LUNA Administrator Username

Password

Please confirm your password
Password

InstallAnywhere by Macrovision

Cancel

Previous

Next

Windows Only

LUNAbdMigrator

LUNA

6.x Migration to 7.x
 Migration Complete

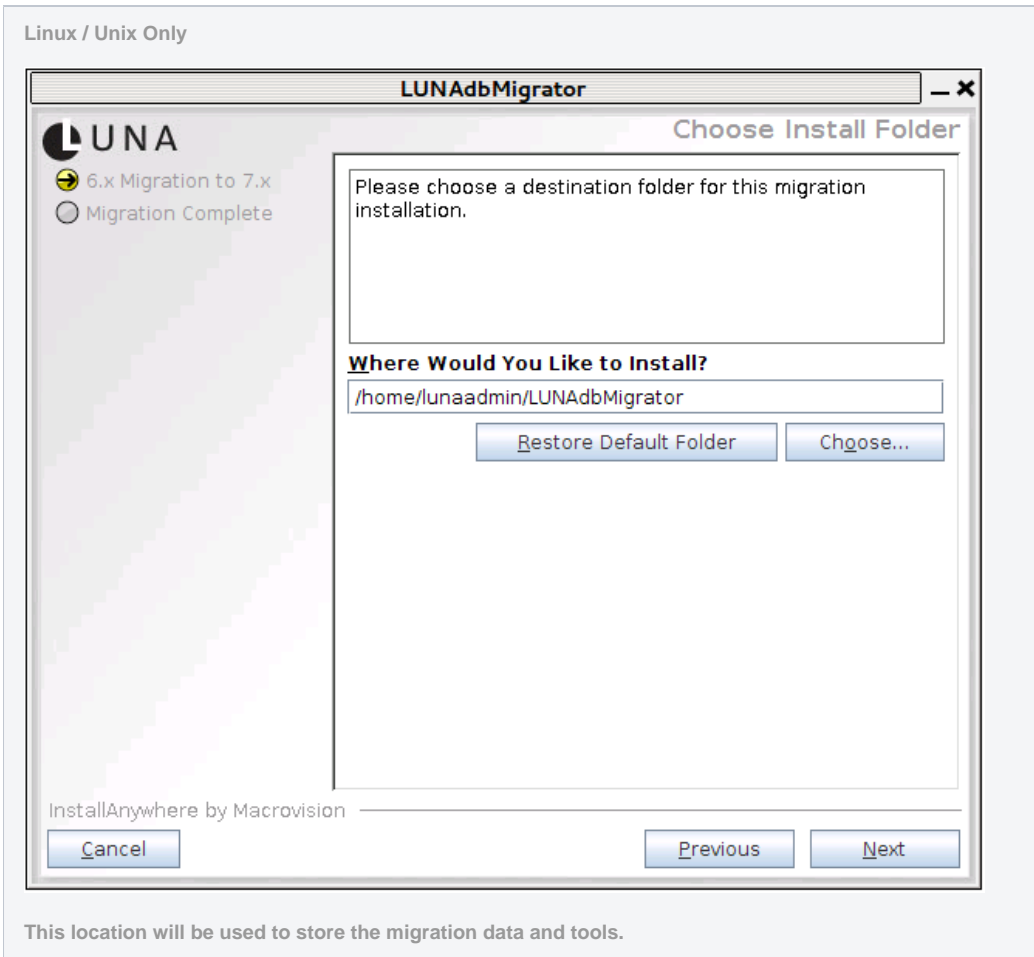
Choose Install Drive

Choose Install Drive: C:\

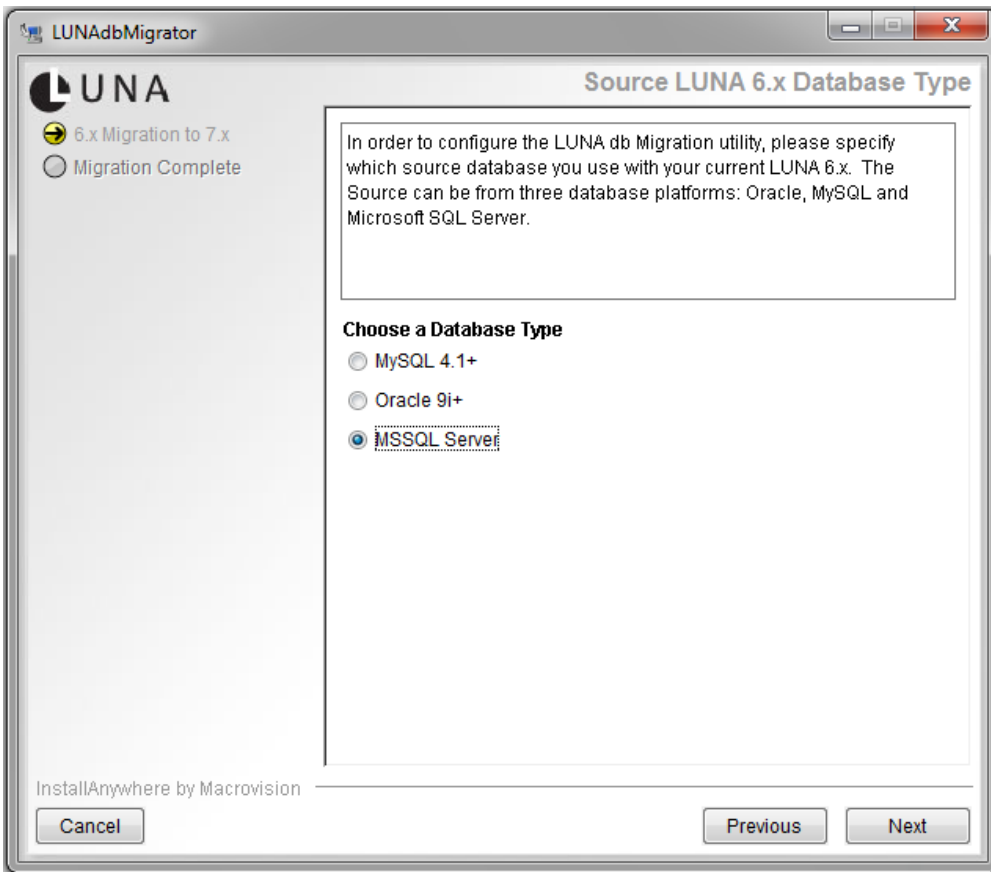
InstallAnywhere by Macrovision

Cancel Previous Next

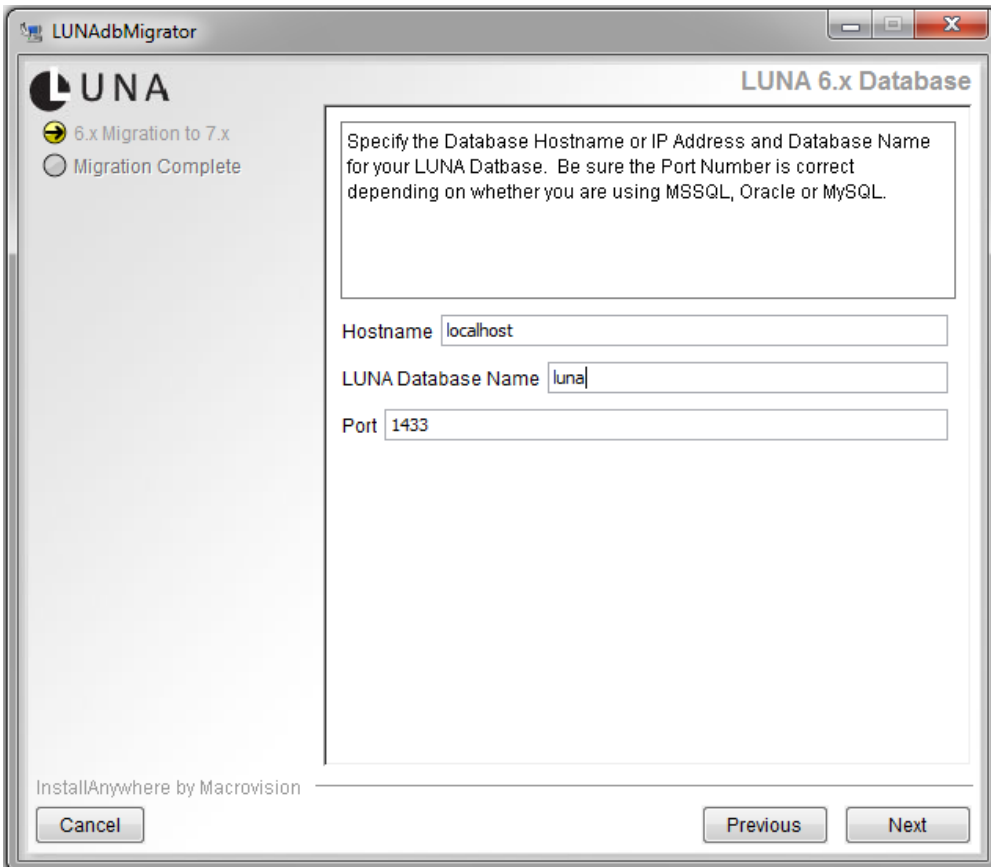
This drive will be used to store the migration data and tools.



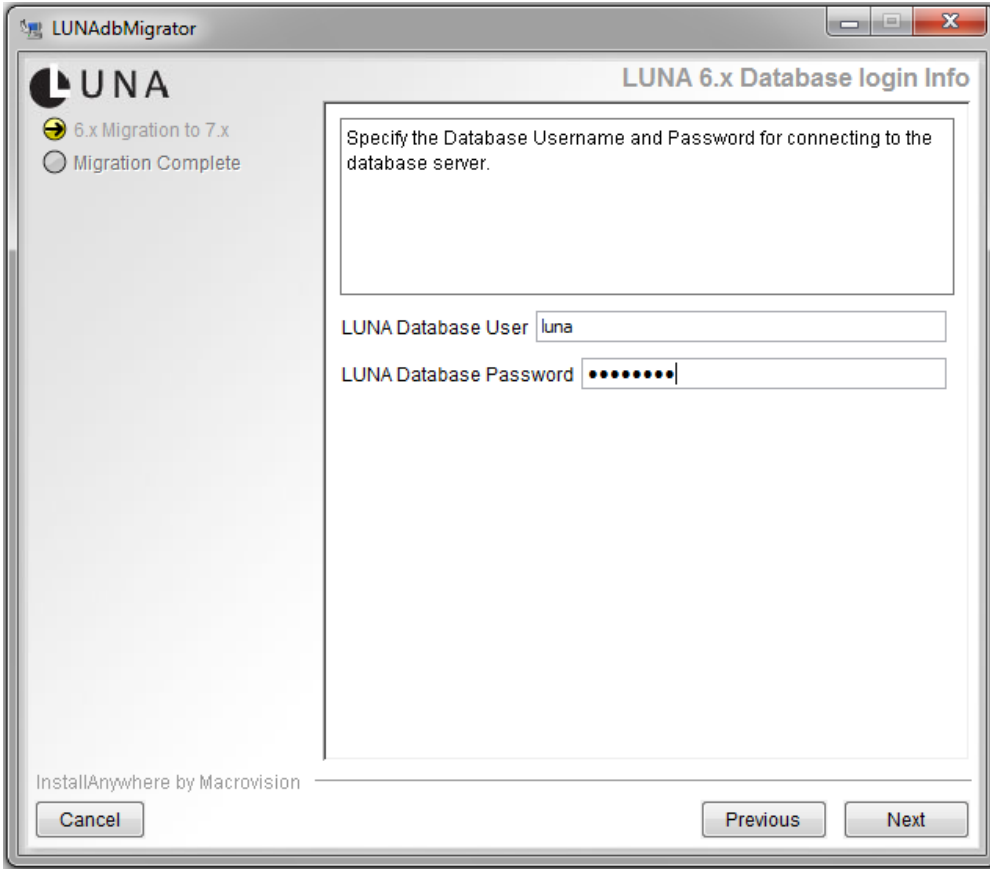
Select your source LUNA 6.x database type.




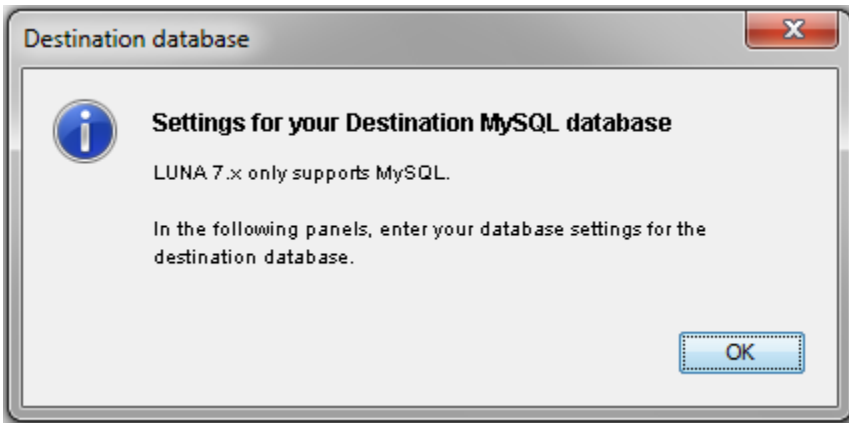
Enter your LUNA 6.x database location and info.



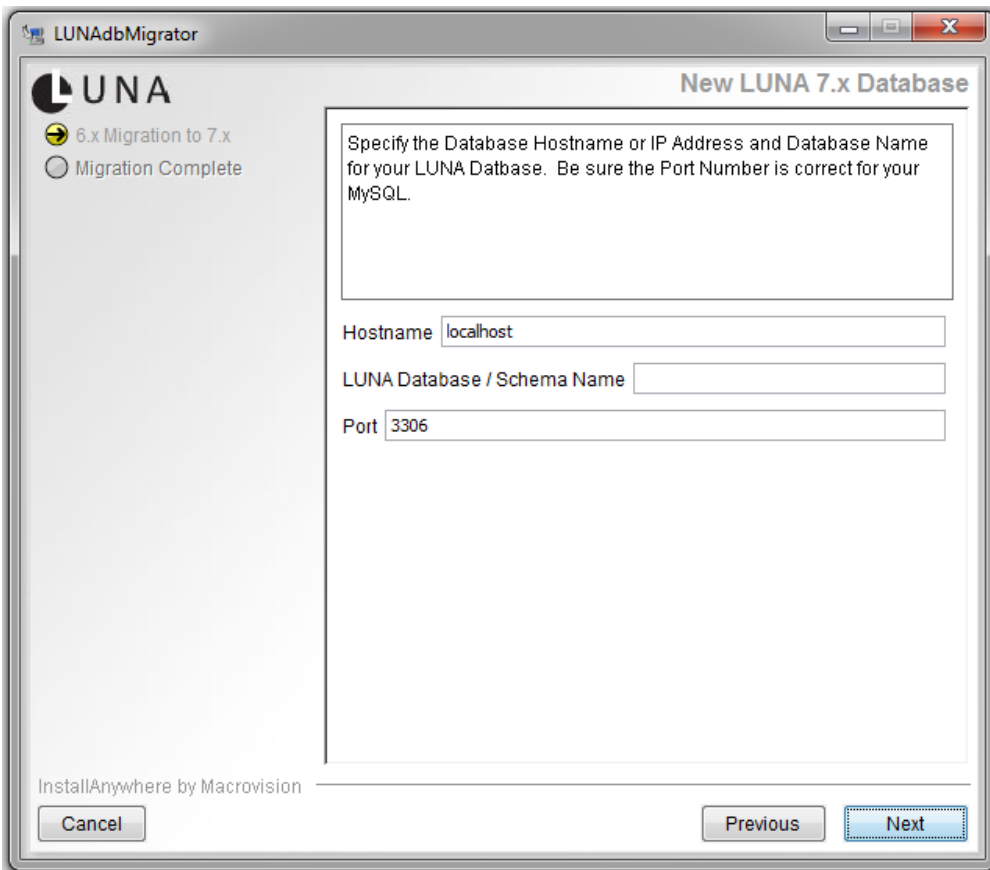
Enter your LUNA 6.x database username and password.



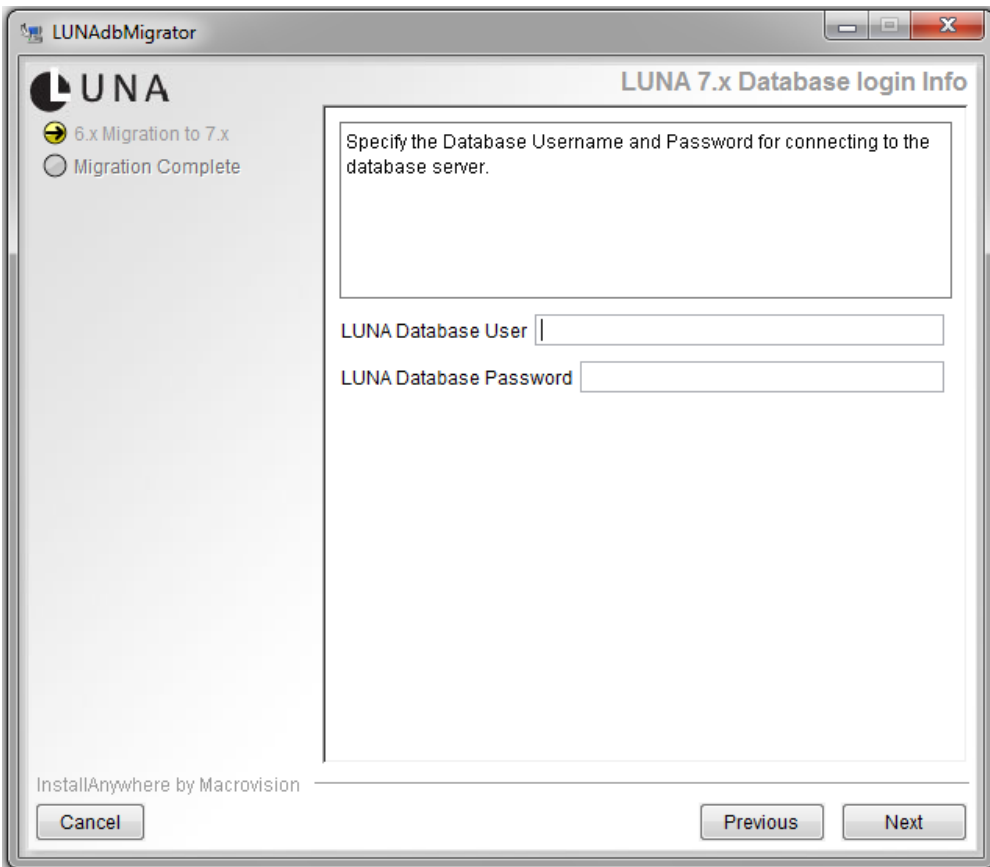
 LUNA 7+ only supports MySQL



Enter your LUNA 7 database location and info.

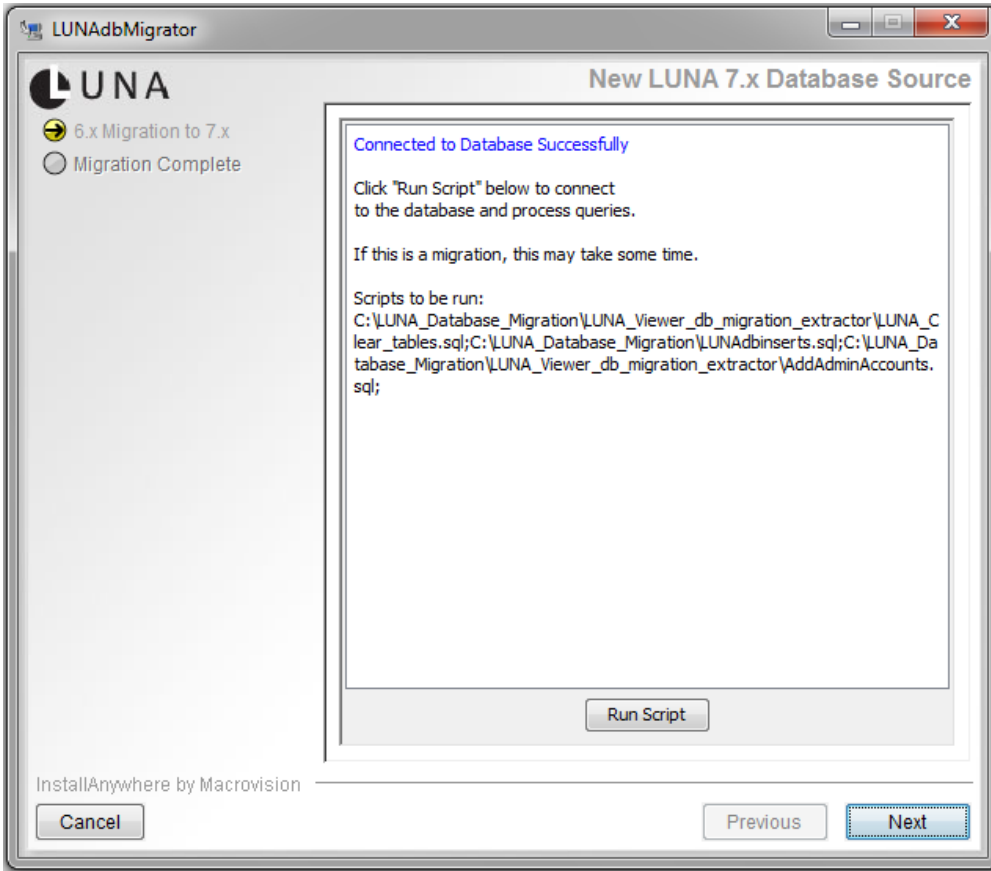


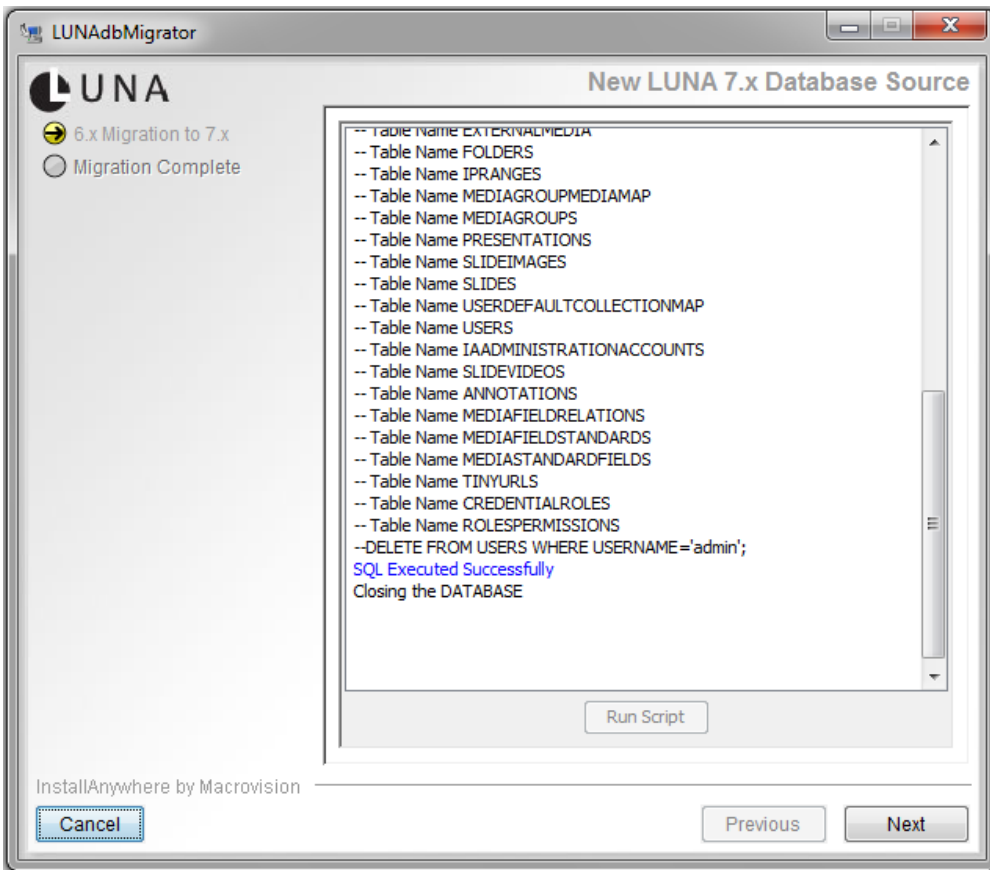
Enter your LUNA 7 database username and password.



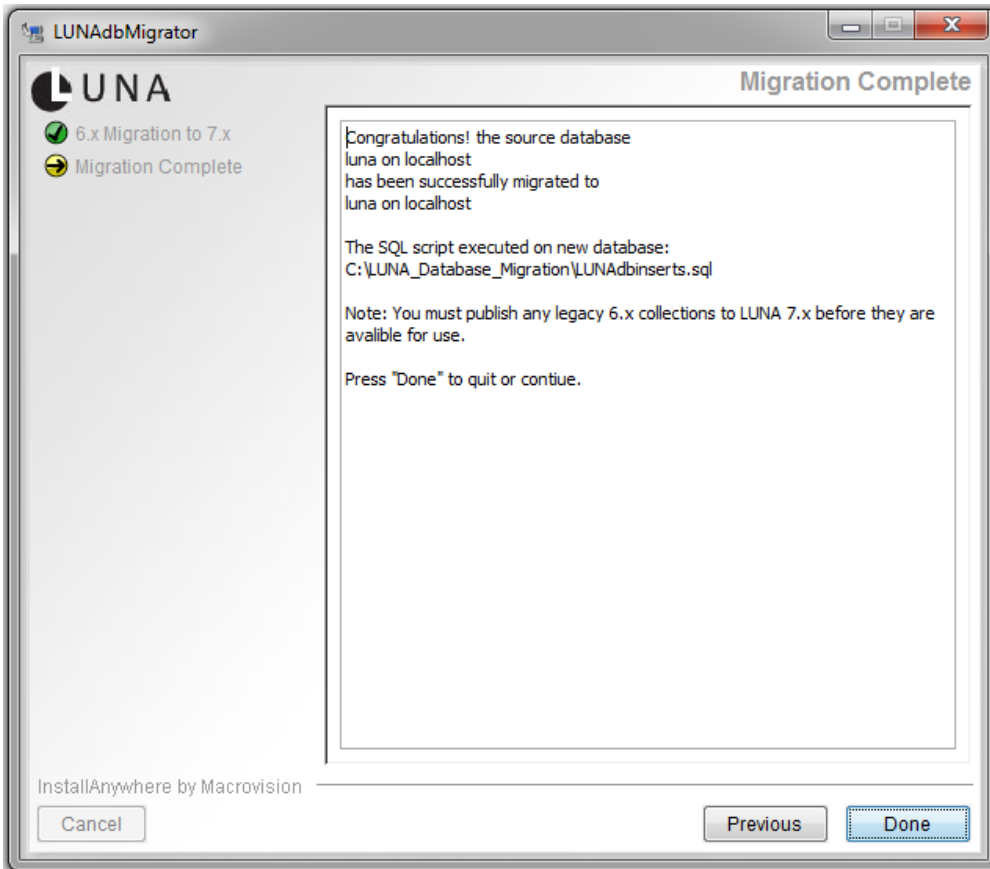
Next you will get a summary page of your choices. To move forward click Install.

Once the Install process finishes, you will be prompted to run a script that will transfer the extracted LUNA 6.x data into the LUNA 7 database.





That's it, you now can move on to migrating or publishing your legacy Insight collections to LUNA 7.




Migrate and/or Publish your Insight 6.x collections to LUNA 7.1+

First, you need to make sure that your existing 6.x Insight Studio client is pointing to the correct LUNA7 Publisher. You can do this one of two ways.

- Install a new instance of Insight Studio and when prompted for the LUNA Publisher address, enter your LUNA7 server address and port number.
- Edit your existing InsightStudio.dat file and change the following 3 lines with the correct server address and port number **luna.example.com:8181**

```
LasLoginURL = http://luna.example.com:8181/las/login-from-studio.htm
LasScheduleURL = http://luna.example.com:8181/las/session-schedule.htm
LasThemeUploadURL = http://luna.example.com:8181/las/image-file-upload.htm
```

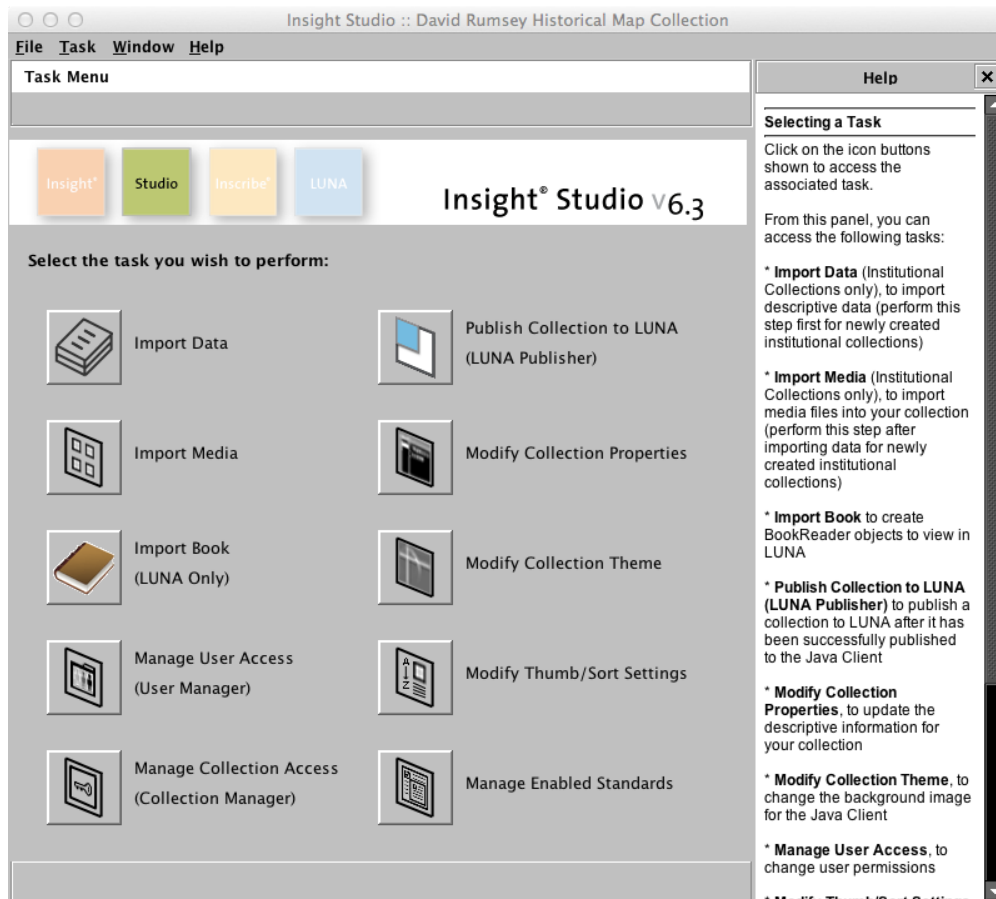
 The InsightStudio.dat file can be found in the installation directory of Insight Studio. This file can be edited with any text editor like notepad on Windows or textedit on the Mac.

Legacy Insight Collections

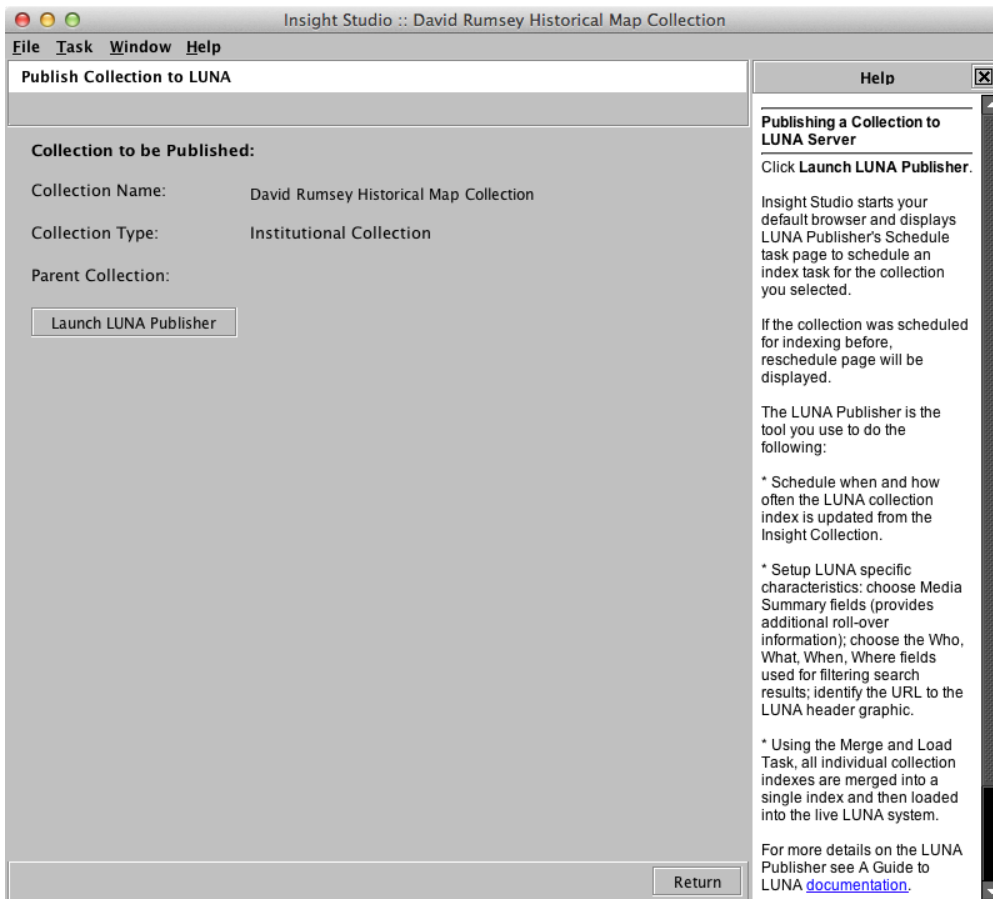
For collections that will continue being managed in the Insight suite just Publish the collections like you did in 6.x (there is no Merge and Load anymore).

Migrating Insight 6.x collections to the LUNA Library

Launch Insight Studio and select Publish Collection to LUNA.



Select Launch LUNA Publisher.



In the top right section select **Migrate to LUNA Library** then follow the instructions on the page.


- Make all the Selections that you would normally do to publish the collection to LUNA.

Virtual Collections


Insight client visible content only (Use for Virtual Collections)

If you choose to migrate a virtual collection, you should select this option. If you do not, ALL records for the Parent collection will be included in the migration.

- Click on the **Archive** button below.
- Depending on the size of your collection this process could take some time. Check the task and once it's in an *inactive* state either modify it or return to this window.

 This part of the process is very similar to the Save & Run Task. When it's finished continue to the next step.

- Click on the **Publish** button below the Archive button. This will open a new window. You may be prompted to login.

 If you are already logged into the LUNA Library, you will not be prompted to login and may see a blank page in your browser. You may also see the spinning icon like the page is loading. At this point, it is safe to leave this page.

If you go into the LUNA Library, you will need to logout then login again to see the collection you are migrating.

- Click *Complete Migration* in the new window.

LUNA Publisher Menu [Schedule Task](#) [Schedule URL Request](#) [Task List](#) [Task Log](#)

Collection Properties Reschedule: David Rumsey Historical Map Collection-1388601044771 Publish to LUNA Viewer OR Migrate to LUNA Library

Collection Name: David Rumsey Historical Map Collection

Task Description:

Theme:

[Select header graphic](#) **Status:** [Upload File](#)

Header Graphic URL:

Canonical Server Address:

User Group:

Title Field:

Summary Field 1:

Summary Field 2:

Summary Field 3:

Summary Field 4:

Fields	Who	What	Where	When
Authors	Author	Type	World Area	Date
Browse Title Sort	Publisher	Subject	City	Event
Download 1	Engraver or Printer	Pub Type	Country	Pub Date
Full Title	Attributed		County	
Image No	Publication		State/Province	
Institution	Author		Region	
List No	Publication			
Download 2	Author			
Note				

Drag and drop up to 2 more fields

Instructions:

To migrate your 6x Insight collection to the LUNA Library:

1. Make all the Selections that you would normally do to publish the collection to LUNA
2. Click on the *Archive* button below.
3. Depending on the size of your collection this process could take some time. Check the task and once it's in an *inactive* state either modify it or return to this window.
4. Click on the *Publish* button below. This will open a new window. You may be prompted to login.
5. Click *Complete Migration* in the new window.

For more details see the [LUNA documentation](#).

Insight client visible content only (Use for Virtual Collections)

Repeat this process for each collection you are migrating.

Post Migration Tasks

Once you have migrated all collections to the LUNA Library, you may want to perform one or more of these tasks.

Move or adjust references to media/images

When a collection is migrated, the original location of the media/images is maintained and a new location for uploading content was selected during the installation of LUNA 7. So you might have two storage locations for your media/images. If both locations are the same, then everything should be fine. If you moved to a new server or are using a different location, you may need to make some adjustment in the database. Contact [Luna Support](#) for assistance.

If you would like to shutdown your Media Manager 6.x/tomcat so that you only have one instance of tomcat running, then you will need to update the reference in your database first (Only do this after all collections are migrated or you might need to do it again).

When collections are migrated the Base URL of where your media is running from is copied to the 7.x database into a table called LL_MEDIASERVERROOTURLS. Only the column URL will need to be updated using a find and replace query.

```
update LL_MEDIASERVERROOTURLS set URL= replace(URL, 'www.myOriginalDomain.edu:8081', 'www.myNewDomain.edu:8181');
```

Tiny URL's that are generated when sharing links need to point to the new location

```
update TINYURLS set MAPPEDURL= replace(MAPPEDURL, 'www.myOriginalDomain.edu:8180', 'www.myNewDomain.edu:8181');
```

External media uploaded using v6 My Uploads

```
update EXTERNALMEDIA set URLSIZE0= replace(URLSIZE0, 'www.myOriginalDomain.edu:8180', 'www.myNewDomain.edu:8181');
update EXTERNALMEDIA set URLSIZE1= replace(URLSIZE1, 'www.myOriginalDomain.edu:8180', 'www.myNewDomain.edu:8181');
update EXTERNALMEDIA set URLSIZE2= replace(URLSIZE2, 'www.myOriginalDomain.edu:8180', 'www.myNewDomain.edu:8181');
update EXTERNALMEDIA set URLSIZE3= replace(URLSIZE3, 'www.myOriginalDomain.edu:8180', 'www.myNewDomain.edu:8181');
update EXTERNALMEDIA set URLSIZE4= replace(URLSIZE4, 'www.myOriginalDomain.edu:8180', 'www.myNewDomain.edu:8181');
update EXTERNALMEDIA set URLSIZE5= replace(URLSIZE5, 'www.myOriginalDomain.edu:8180', 'www.myNewDomain.edu:8181');
update EXTERNALMEDIA set URLSIZE6= replace(URLSIZE6, 'www.myOriginalDomain.edu:8180', 'www.myNewDomain.edu:8181');
update EXTERNALMEDIA set URLSIZE7= replace(URLSIZE7, 'www.myOriginalDomain.edu:8180', 'www.myNewDomain.edu:8181');
update EXTERNALMEDIA set URLSIZE8= replace(URLSIZE8, 'www.myOriginalDomain.edu:8180', 'www.myNewDomain.edu:8181');
```

Books

```
update LL_MEDIAFILES set FILENAME= replace(FILENAME, 'www.myOriginalDomain.edu:8180', 'www.myNewDomain.edu:8181');
```

Updating LUNA 7 Repository for BookReader objects



We are only providing instructions for Linux/Unix based systems. For Windows please contact support.

First identify collections that contain BookReader objects. If you're not sure, you can use the advanced search in the LUNA Library.

Select Other Criteria -

- For display in LUNA Viewer
- Not for display in LUNA Viewer
- Starred
- Unstarred
- Draft
- Saved
- Unlinked media item
- Unlinked record
- Linked media item
- Linked record
- Public Independent Media Items
- Private Independent Media Items
- Records
- Media Items
- Books
- Miscellaneous Files
- Audio
- Movies

Once identified, get the collectionID. You can find this if you open a collection in the LUNA Library and look at the URL. In the following example BINDINGS~1~1 is the ID

<http://www.example.com/editor/e/BINDINGS~1~1/media/get>

On your server go to the directory where your collection repository is located.

<LUNA Install location>/LunaImaging/7.x/LUNA/repository/BINDINGS~1~1

Test Looking for books

```
grep -r1 "www.myOriginalDomain.edu:8180"
```

If you found books with your old URL then change them with the following.



Make sure you have a backup of your repository before running this command

Replace Book URLs

```
grep -r1 "www.myOriginalDomain.edu:8180" | xargs sed -i 's/www.myOriginalDomain.edu:8180/www.myNewDomain.edu:8181/g'
```

Repeat this for each collection that contains BookReader objects.



It is not advised to run the replace statement above on your entire repository. It may take a tremendous amount of time and should only be run on collections that contain BookReader objects.

Once this is complete, Restart LUNA 7's tomcat then rebuild your LUNA Viewer's index for each collection. This is done in the Collection Manager. This will update all the URL references to all your media.

[Rebuild LUNA Viewer Index](#)

Shutting down your Insight suite

Once you are finished with your migration, you should go through a process of review. This should involve all stake holders involved with collection management. Each collection should be reviewed and accounts tested for appropriate access.

Once tested, shut down all Collection Managers, User Manger and tomcat from the Insight suite and LUNA 6.x's version of tomcat. Then review the collections and make sure the media is showing up properly.

Password Resets

Any LUNA 6.x self registered account that uses the LUNA's suite for authentication passwords will need to be reset. These legacy accounts will not work and the owners will need to go through a password reset.

LDAP

If you were using LDAP for Authentication, you will need to make any adjustments that you had in your LUNA 6.x instance the same in your LUNA 7 version.

Validating your record and media counts

After migrating your collections to LUNA you'll want to validate the content. To help you understand the differences and similarities for media and record counts between v6x and v7.1 here are a few guidelines.

Overall, when you are comparing the counts between Inscribe and LUNA, the total number of items in the LUNA Library are expected to be higher. There are a couple of reasons why.

- Inscribe will only show you the total number of records in your collection. The LUNA Library will show you counts for all items, whether they are media items or records. If you have orphan media items or orphan records, the LUNA Library will include them in the total.
- The counts in Inscribe might also be lower because the system only counts the number of records, regardless of how many media items may be linked to a single record. In the LUNA Library, when multiple images are linked to a single record the system counts the records for as many times as an image is linked to it. If 3 media items are linked to 1 record, LUNA will count it as 3.

Counts that should match:

- Unlinked Media Items: this number should be the same in Inscribe as it is in the LUNA Library
- Images for display in the LUNA Viewer: this number should be the same in LUNA 6x as it is in LUNA 7.1