

# Explore LUNA

We hope LUNA's intuitive interface makes it easy for you to explore content, and manage media. **But to help get you on your way here are some fun things you can do to help you get a feel for how LUNA works:**

- [LUNA Viewer](#)
  - 1. [Play with the layout](#)
  - 2. [Explore the Detail View](#)
  - 3. [Check out different ways to search](#)
  - 4. [Create a Media Group and play a slideshow with Flickr content](#)
- [LUNA Library](#)
  - 1. [Edit a data record](#)
  - 2. [Add an image to a record](#)
  - 3. [Copy an image from one collection to another](#)

Check out our video tutorials at our [YouTube channel!](#) Some additional Flash Tutorials (no sound) available [here](#).

When you're ready to build collections let us know, and if you need any help just [reach out](#) to us.

## LUNA Viewer

The LUNA Viewer is the dynamic web-based front end used to deliver content to your audience. You can perform simple keyword [searches](#) or complex structured queries, and can control how you view, browse, and organize your results to create [Media Groups](#) and [presentations](#). You can save and share your work by [linking and embedding](#) any view, image, group, or presentation.

Start your exploration of the Viewer with these easy tasks:

### 1. Play with the layout

- Browse all collections, or pick just one.
- Change the thumbnail size, it's great to browse big images.

### 2. Explore the Detail View

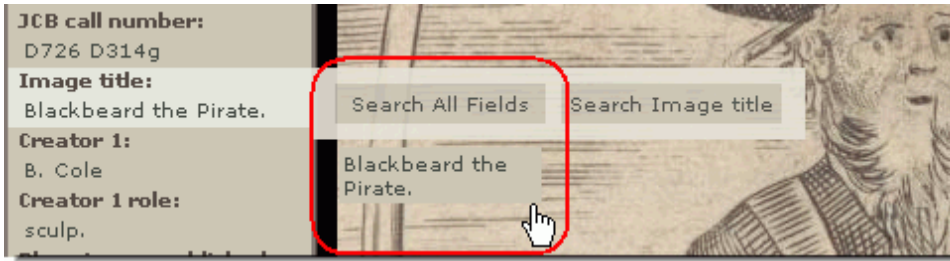
- Click on a thumbnail image once to bring it into the detail view where you can zoom in on image details.
- Bring an image or two into the LUNA Workspace by clicking on the icon in the upper left corner of the thumbnail, or from the Detail View.

You're ready to move on to adding annotations, exporting, using the Quick View and [more](#).

### 3. Check out different ways to search

- Pick a category facet, then narrow the results.

- Use the data panel search.



#### 4. Create a Media Group and play a slideshow with Flickr content

- Go to Create > Create Media Group. Now you've got an active Media Group!
- As you browse, click on the icon in the right corner of the thumbnail to add the image to your active Media Group. Add as many as you like!
- Go to Explore > External Media Search, enter a keyword search term or if you have a Flickr account enter your username.
- Add some of these images to your active Media Group.
- Go to Explore > Media Groups and click on the title of your active Media Group.
- Click on Slideshow et voila! You've got a cool slideshow with content from LUNA and Flickr.

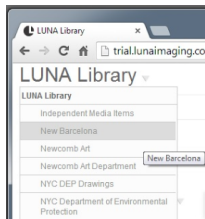
If you're ready to take it up a notch you can also add content from your desktop via the My Uploads feature to this slideshow!

You can also manage your Media Group properties, re-order the media, and [more](#).

## LUNA Library

Manage all your media from one location within the LUNA Library. In the LUNA Library you can [upload new content](#), create records, [edit records](#), add items to collections, [organize content with batches and labels](#), [search for content](#), and more. Add items directly to a collection, or store them in the Independent Media Items Container (IMIC).

### 1. Edit a data record



- Select a collection from the collection menu in upper left corner.
- While browsing the thumbnails in a collection, select one and click on the Edit icon in the upper left corner of the thumbnail. Now you're in the Record Editor feature.



- Go ahead and add, edit, or delete some data. Click Save.
- Go back to the Viewer and you'll immediately see the changes you made are now live!

### 2. Add an image to a record

- While browsing the thumbnails in a collection, select one and click on the Edit icon in the upper left corner of the thumbnail. Now you're in the Record Editor feature.
- Click on the "+" icon and upload an image from your desktop. The image will automatically be linked to that record!

### 3. Copy an image from one collection to another

- While browsing the thumbnails in a collection, select a few by just clicking on them.
- From the "More" menu chose "Add to collection" and select a collection from the list.



You've now added those images to the collection and created blank records for them!